



LOGGING IN TO MT4

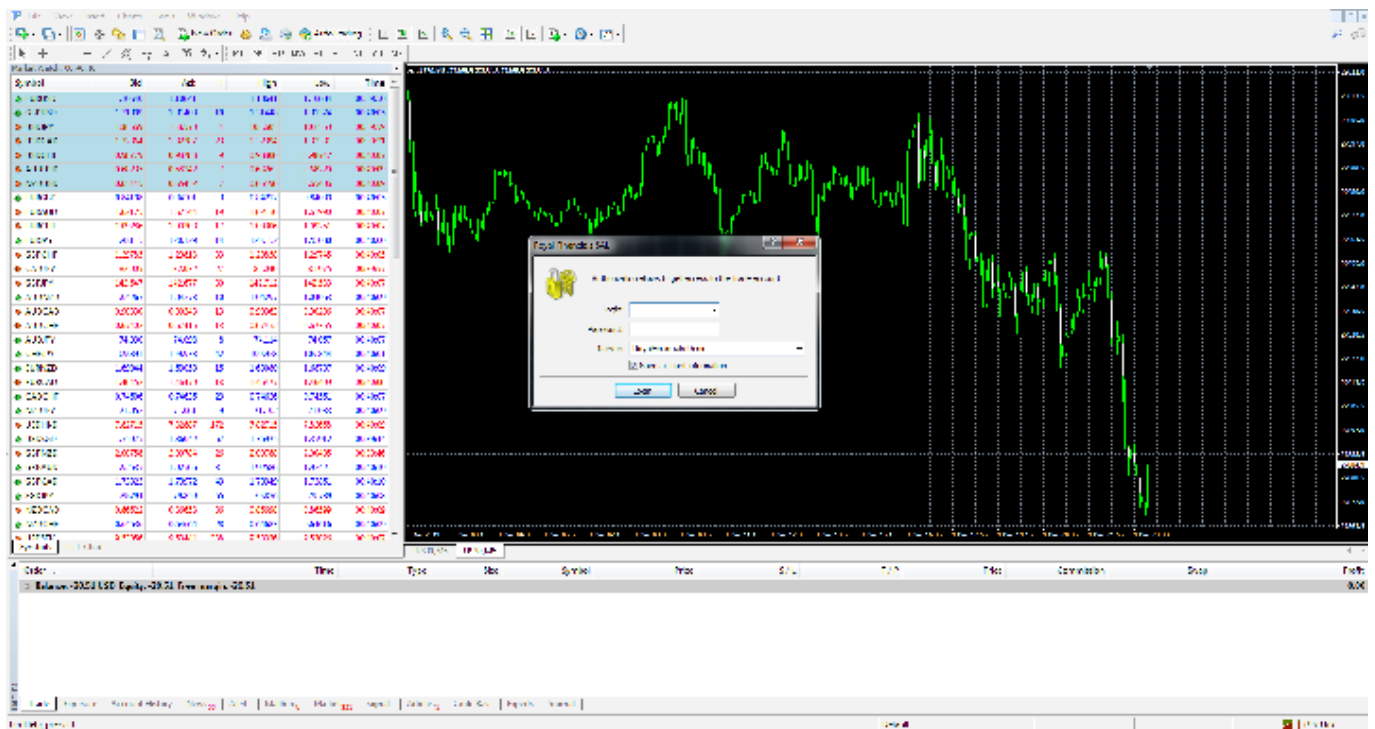
LOGGING
IN MT4

STEP 1

Once you have downloaded the platform, its time to log in. The first time you log in you will see a registration form. If you are a new demo user, fill out the fields, click on the checkbox in the bottom left, and then click next. If you are a current demo account user or a current live account holder with Royal, click on cancel.

STEP 2

If you clicked on cancel in the previous step, you will have to login by navigating to File, and then clicking on Login to Trade Account.



STEP 3

Enter your Login and password manually. At the Server drop down, make sure to select ROYAL-Demo if you are a demo account holder, or ROYAL-Real-01 if you are a live account holder. Click on Login.

STEP 4

If you have successfully logged in to the platform, red and green bars will appear at the bottom left of the platform. If you have entered incorrect login information, an Invalid Account error will appear.

